

COMPACT WALL HUNG BASIN 22"

Cat. No.
4-54X



Features:

- Made of Vitreous China
- Available with 1 hole (**4-541**), 4"cc (**4-544**), 6" mini widespread (**4-546**) or 8" widespread (**4-548**)
- Pre-drilled overflow hole
- Mounting hardware included



Faucet not included

Colors:

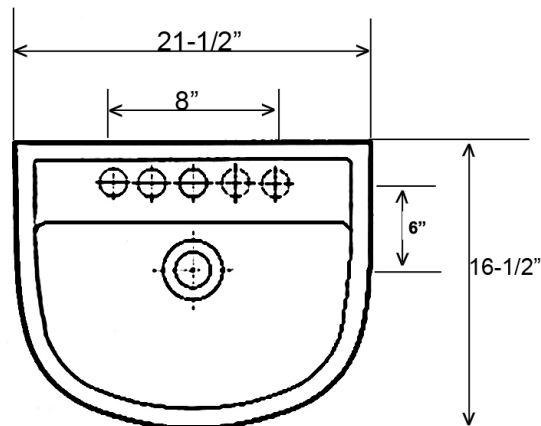
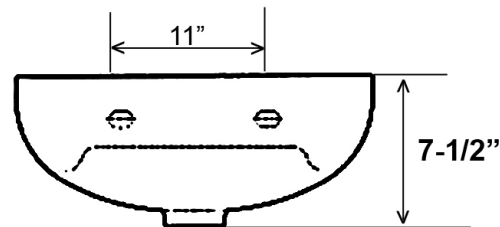
WH White



Mounting hardware

Meets or exceeds the following specifications: ASME A112.19.2 2018 and CSA B45.1-18 for ceramic plumbing fixtures.

W: 21-1/2"
D: 16-1/8"
H: 7-1/2"



Interior Dimensions:

Basin Interior: 19-1/4" x 10-1/2"
Basin Depth: 6"
Water depth to OF: 3-3/8"
Mount holes cc: 11"
Spout hole: 1-3/8"

Dimensions of fixture are nominal and may vary within the range of tolerances established by ANSI Standard A112.19.2-2018. Dimensions and specifications subject to change without notice.